

**NOW
LEASING**

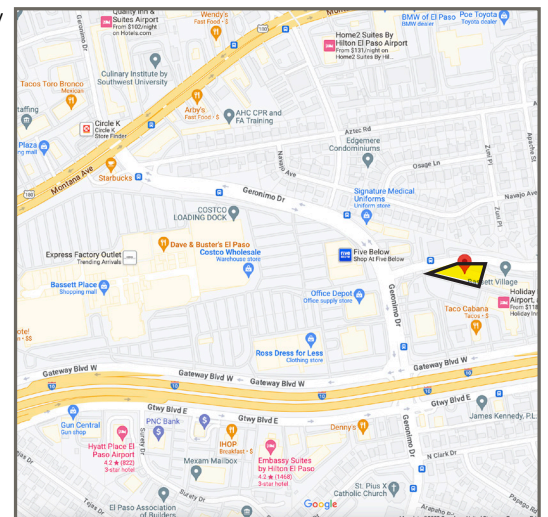
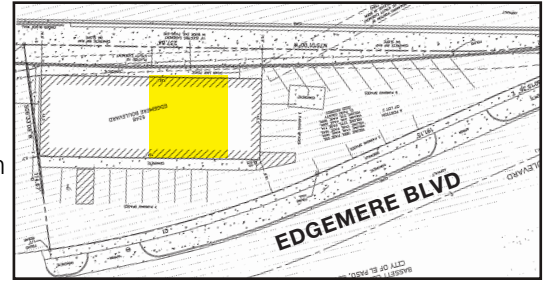
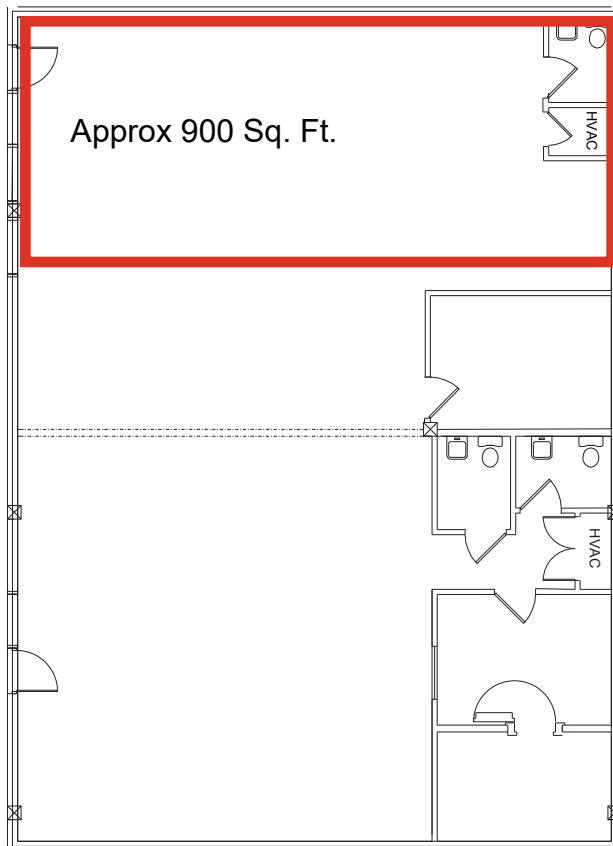
**RETAIL/PROFESSIONAL OFFICE
6250 EDMERERE
EL PASO-EAST**

APPROX. 2,706 RSF

DEMISABLE

AMENITIES:

- Large Space with Open Floorplan at the Intersection of Edgemere and Geronimo between Interstate 10 and Montana Ave
- Additional Storage & Safe Private Restrooms
- Building and Pylon Signage Available
- Individual HVAC and Heating Systems
- Ample Free Parking
- Abundant Residential Developments, Premier Restaurants & Business Attractions in Close Proximity



TRAFFIC COUNT

8,692+ At the Intersection
per day of Edgemere and Geronimo

23,564+ Exiting I-10 to Geronimo
per day

NEARBY

El Paso International Airport, Fort Bliss,
Bassett Place Shopping Mall, Cielo Vista Mall,
The Fountains at Farah, University Medical
Center



915-532-3456

www.epleasing.com | info@epleasing.com

PROFESSIONALLY MANAGED BY EP SHALOM MANAGEMENT, LLC
444 EXECUTIVE CENTER BLVD., SUITE 120, EL PASO, TX 79902

Notwithstanding any other information (including, without limitation, any marketing, sales, advertising, brochures, or similar information), all prices, building design, architectural renderings, plans, amenities, features and specifications or any and all improvements to any part of the property are subject to change or cancellation without notice.