

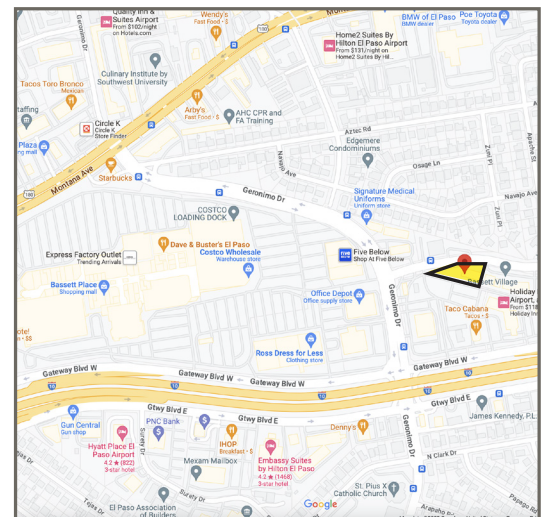
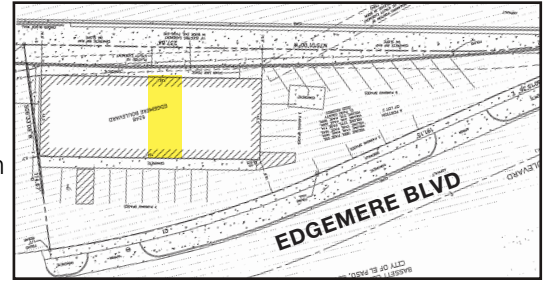
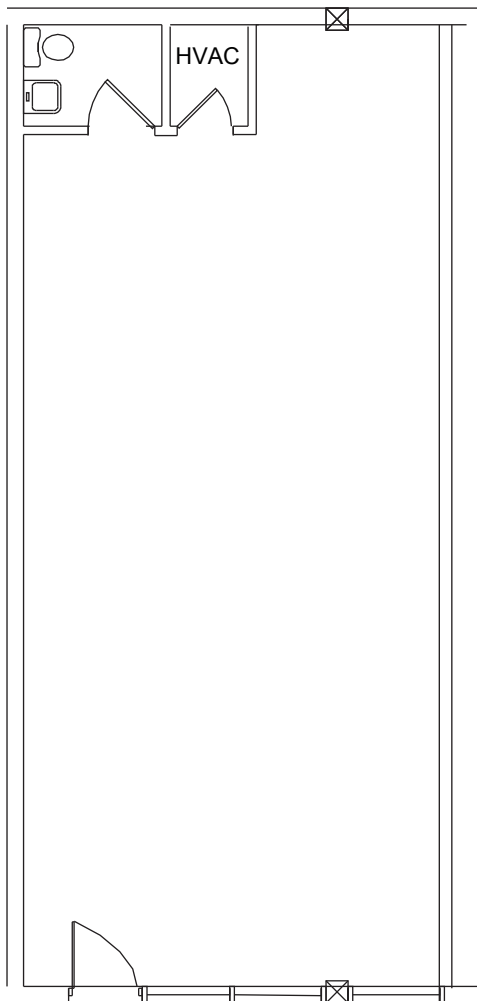
**NOW  
LEASING**

**RETAIL/PROFESSIONAL OFFICE  
6252 EDGEMERE  
EL PASO-EAST**

**APPROX. 858 RSF**

**AMENITIES:**

- Large Space with Open Floorplan at the Intersection of Edgemere and Geronimo between Interstate 10 and Montana Ave
- Private Restrooms
- Building and Pylon Signage Available
- Individual HVAC and Heating Systems
- Ample Free Parking
- Abundant Residential Developments, Premier Restaurants & Business Attractions in Close Proximity



**TRAFFIC COUNT**

**8,692+** At the Intersection  
**per day** of Edgemere and Geronimo

**23,564+** Exiting I-10 to Geronimo  
**per day**

**NEARBY**

El Paso International Airport, Fort Bliss,  
Bassett Place Shopping Mall, Cielo Vista Mall,  
The Fountains at Farah, University Medical  
Center



**915-532-3456**

**www.epleasing.com | info@epleasing.com**

PROFESSIONALLY MANAGED BY EP SHALOM MANAGEMENT, LLC  
444 EXECUTIVE CENTER BLVD., SUITE 120, EL PASO, TX 79902

Notwithstanding any other information (including, without limitation, any marketing, sales, advertising, brochures, or similar information), all prices, building design, architectural renderings, plans, amenities, features and specifications or any and all improvements to any part of the property are subject to change or cancellation without notice.