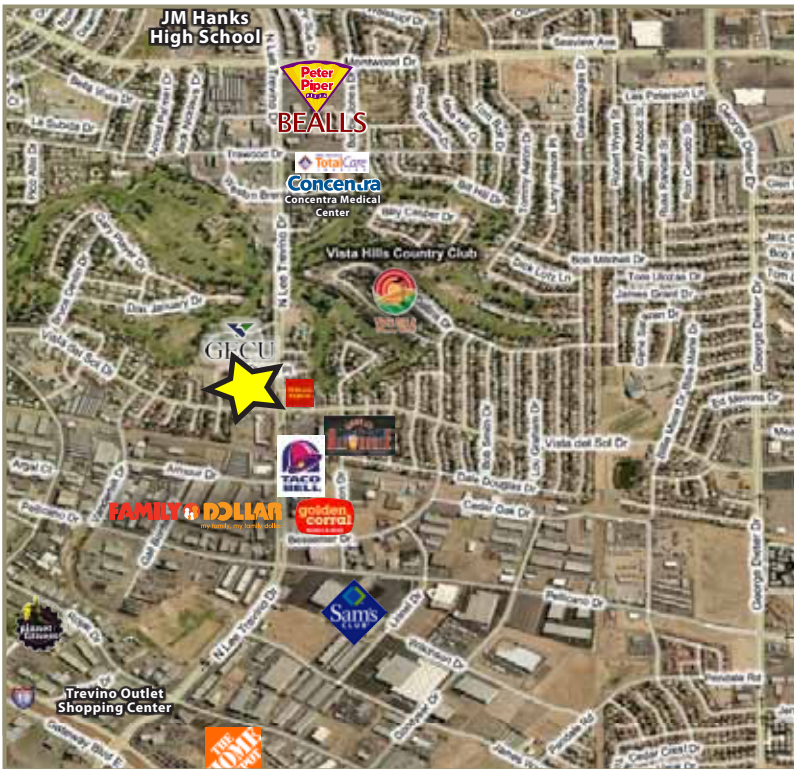




CHASE BUILDING ON LEE TREVINO

1533 NORTH LEE TREVINO, EL PASO-EAST



PROPERTY HIGHLIGHTS

- Outstanding Location at the Busy Intersection of North Lee Trevino and Vista Del Sol with Close Access to Interstate 10
- Four Mix-Use Buildings that Consist of Approx. 23,000 Rentable SF Connected by an Open Atrium
- Suite, Directory & Roadside Monument Signage Available
- Private Address, Entrances, & Restrooms
- Abundant Residential Developments Adjacent & in Close Proximity
- Beautifully Landscaped
- Free, Building Adjacent Parking
- Utilities Included
- Janitorial: General Cleaning & Trash Service Available
- State of the Art, Computerized Heating (Gas) & Cooling (Refrigerated) Systems Controlled by Management Office at a Comfortable Setting

TRAFFIC COUNT

50,585 At the Intersection of Trawood & North Lee Trevino
per day

NEARBY

Vista Hills Country Club, Sun Hollow Apartments, Concentra Medical Center, JM Hanks High School



CHASE BUILDING ON LEE TREVINO

1533 NORTH LEE TREVINO, EL PASO-EAST

