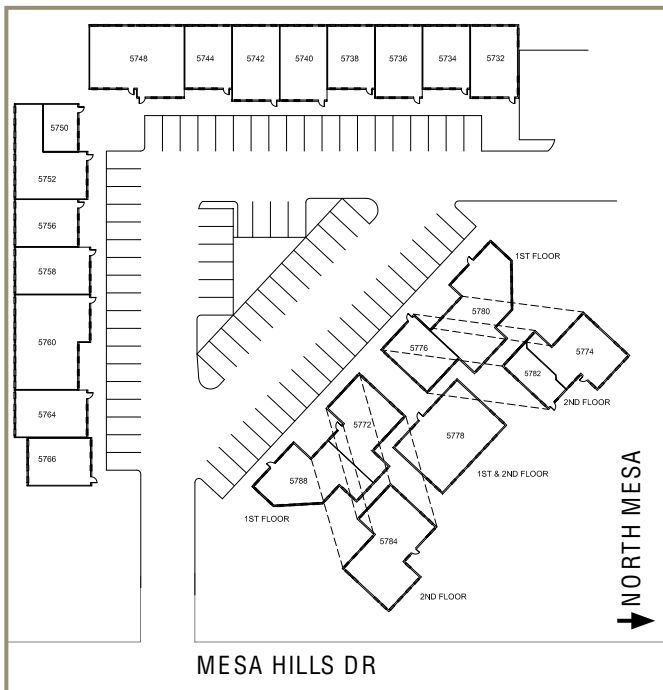




THE SUMMIT

5732-5788 North Mesa, EL PASO-WEST



PROPERTY HIGHLIGHTS

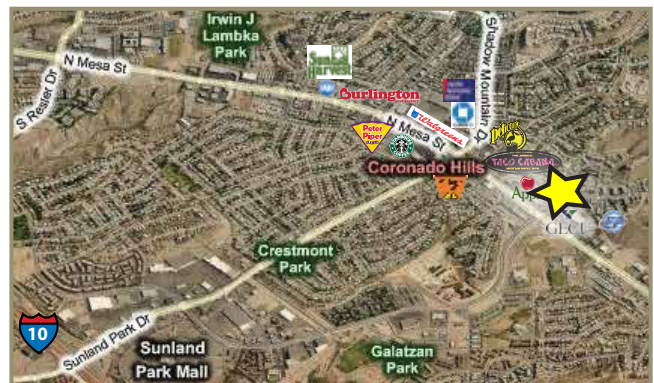
- Located in El Paso's Affluent and Growing West Side
- Outstanding Location at the Intersection of Mesa & Mesa Hills with Close Access to Interstate 10
- Three Mix-Use Buildings that Consist of Approximately 30,000 Rentable SF
- Private Address, Entrances, & Restrooms in Most Offices
- Beautifully Landscaped with Fantastic Mountain Views
- Abundant Apartment Developments Adjacent & in Close Proximity
- Free, Ample Building Adjacent Parking
- Janitorial: General Cleaning & Trash Service Available

TRAFFIC COUNT

44,757 At the Intersection of Mesa Hills per day & North Mesa St.

NEARBY

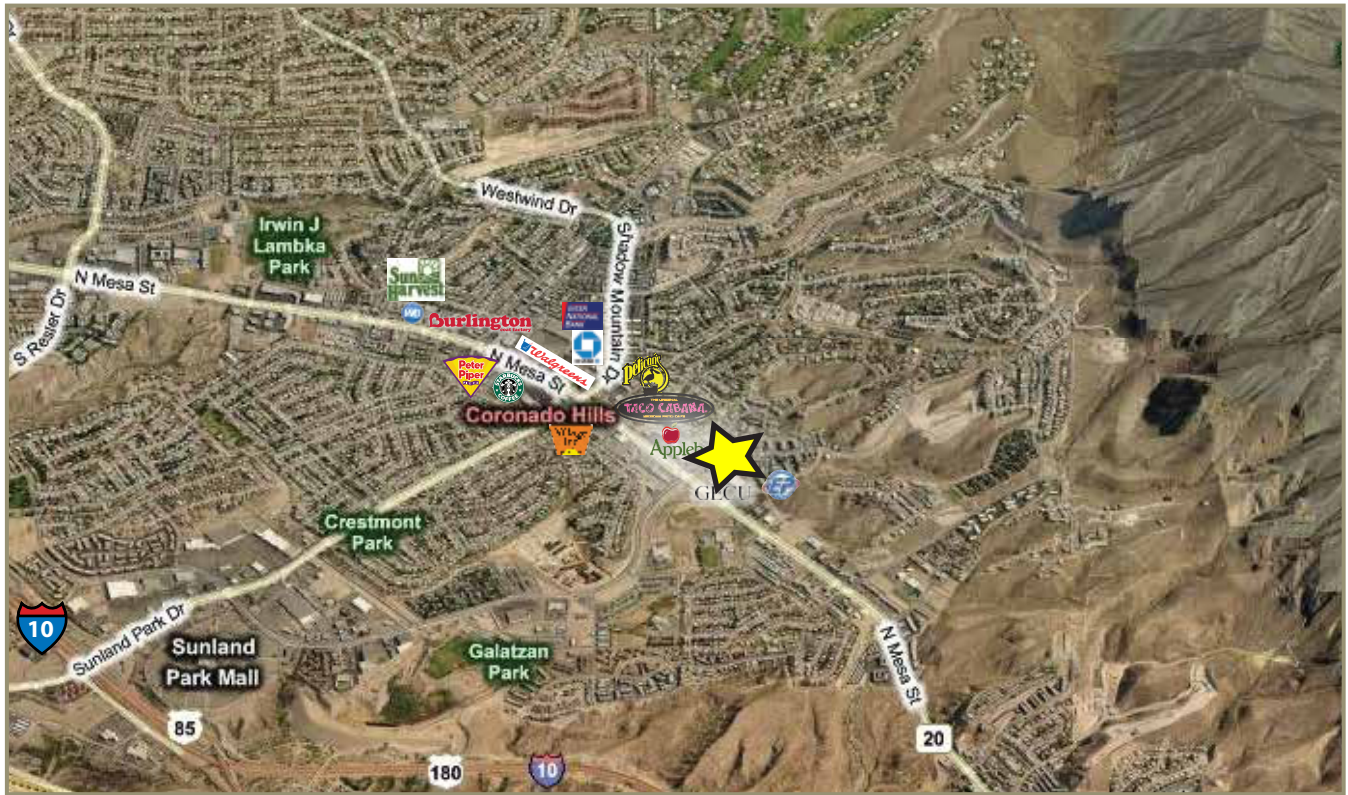
EP Fitness, Sunland Park Mall, GECU, Interstate 10





THE SUMMIT

5732-5788 North Mesa, EL PASO-WEST



TRAFFIC COUNT

44,757 At the Intersection of Mesa Hills
per day & North Mesa St.

NEARBY

**EP Fitness, Coronado Country Club,
Sunland Park Mall, Applebees**

PROPERTY HIGHLIGHTS

- Located in El Paso's Affluent West Side Shopping Corridor
- Outstanding Location at the Intersection of Mesa & Mesa Hills with Close Access to Interstate 10
- Three Mix-Use Buildings that Consist of Approximately 30,000 Rentable SF
- Private Address, Entrances, & Restrooms in Most Offices
- Beautifully Landscaped with Fantastic Mountain Views
- Abundant Apartment Developments Adjacent & in Close Proximity
- Free, Ample Building Adjacent Parking
- Janitorial: General Cleaning & Trash Service Available



THE SUMMIT

5732-5788 North Mesa, EL PASO-WEST

